



## LONG DISTANCE RACE COURSE CARD v1.22

### The Starting Procedure.

VHF Channel M1. If no OOD on duty then fastest boat to act as committee boat.

Normal 5-4-1-go guns. Start horns will also be transmitted on VHF

### The Finish Line.

The start/finish line will be full width of the Batemans Tower Line (no E or W). If no OOD on duty then it will be the responsibility of each boat to record their finishing time to the nearest second (preferably from a GPS clock or radio updated device), and if possible the names of the boats finishing ahead and behind you. On completion please text, email or Whatsapp message to Alan Lee ([aglee1@live.co.uk](mailto:aglee1@live.co.uk), 07917 825989) as soon as possible after your race finish.

### Course L 1 - Approx 45 Nm

START - Colne Point (P) – Colne Bar (P) - Eagle (P) - Knoll (S) - Wallet Spitway (S) - Swin Spitway (P) – GFS-WF5 (P) - Gunfleet Spit (P) - Northeast Gunfleet (P) - North Eagle (P) – Colne Bar (S) - Inner Bench Head (P) - Finish.

### Course L 2 - Approx 30Nm

START - Colne Pt (P) - Colne Bar (P) - Eagle (P) - Knoll (S) - Wallet Spitway (P) – Wallet No 4 (P) – ‘Karindy’ (P) [Green Conical Buoy in position **51°48.1’N, 01°13.4’E**]\* - Wallet No 3 (S) - North Eagle (P) - Colne Bar (S) - Inner Bench Head (P) - Finish.

\* Off Frise Point Holland Haven, (0.5Nm SE of 60mtr Mast on shore)

### Course L 3 – Approx 27Nm

START - Colne Point (P) – Colne Bar (P) – N Eagle (S) – Wallet 4 (S) – Wallet No3(S) Knoll(S) - Eagle (S) – Colne Bar (S) – Inner Bench Head (P) – Finish

### Course L 4 – Approx 24Nm

START – Colne Point (P) – Colne Bar (S) – Bench Head(S) – WMYC 2 (P) – WMYC 5 (P) - Thirslet (P) - Bench Head(P) – Colne Bar (P) – Inner Bench Head (P) – Finish

(See Appendix A Course Diagrams)



Non CYC Marks:

KARINDY (Green conical buoy off Gt Holland beach): 51°48.1'N, 01°13.4'E

GFS- WF5: 51°41.95'N, 01°11.71'E

WMYC 2 : 51°45.21'N, 00°56.62'E

WMYC 5 : 51°44.92'N, 00°53.93'E

Race communications will be on **VHF Channel M1**. If it is deemed necessary to shorten the course after the race has started all competitors will be informed on VHF.

All competing boats should be capable of racing in the open sea and encouraged to carry all relevant safety equipment.

**NOTE: IT IS THE RESPONSIBILITY OF THE SKIPPER OF ANY VESSEL ENTERING THE RACE TO TAKE INTO CONSIDERATION THE FORECAST WEATHER, SEA CONDITIONS, THE CAPABILITIES OF THEIR CREW AND BOAT TYPE TO DECIDE WHETHER OR NOT TO START THE RACE.**

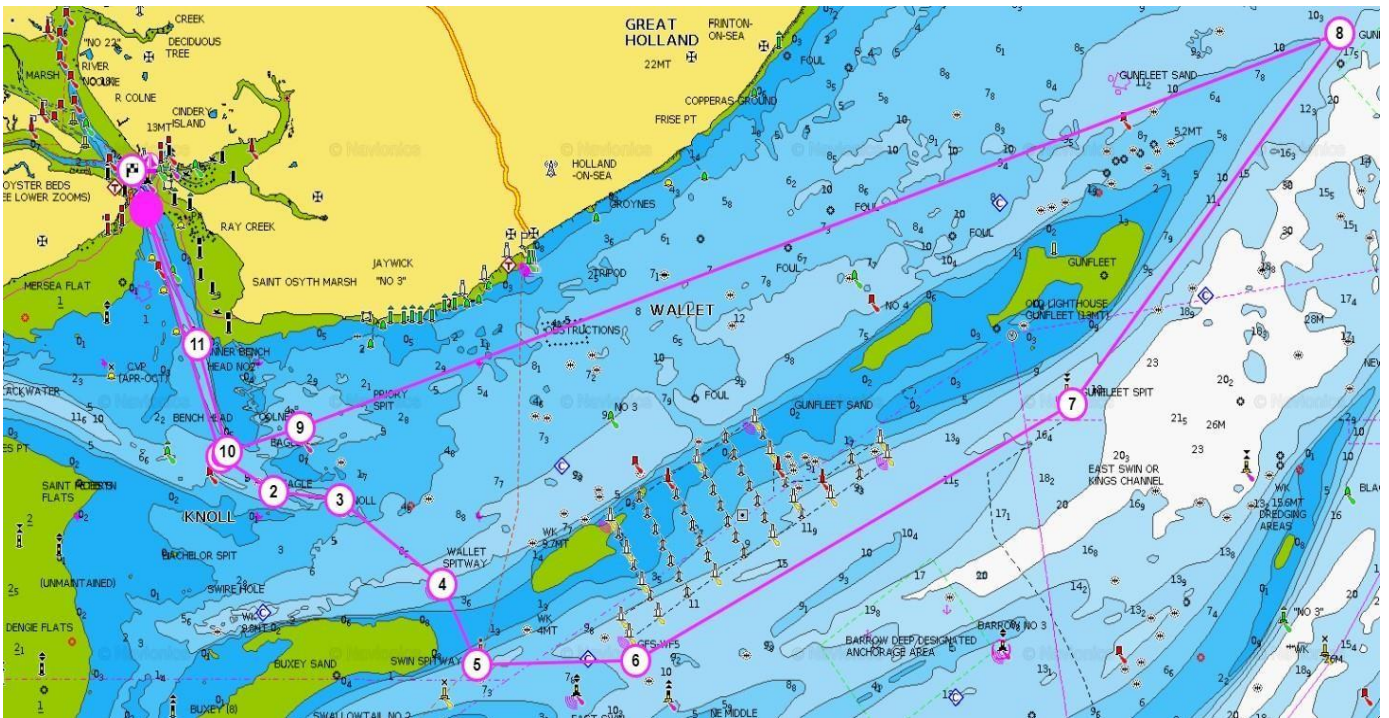
**PLEASE RADIO OR RELAY TO BATEMAN TOWER IF RETIRING.**

## APPENDIX A – DIAGRAM OF COURSES

NOTE! Waypoints shown do not necessarily correlate to course marks.

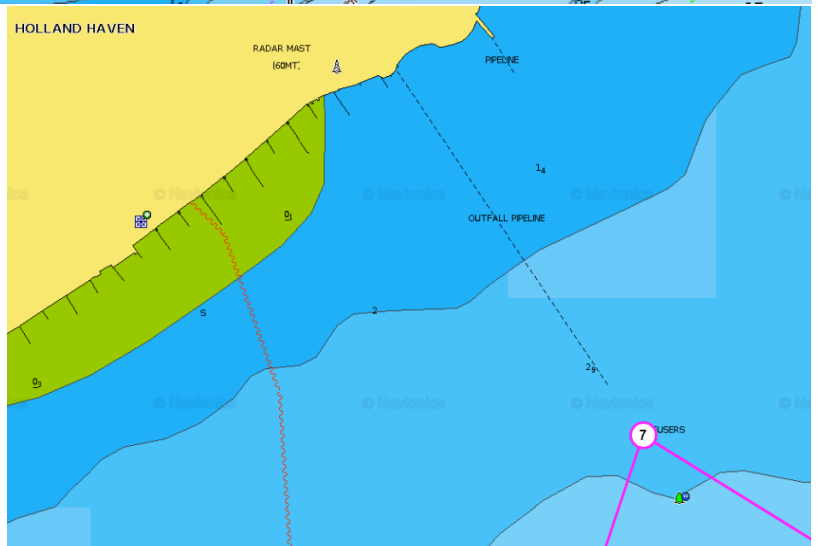
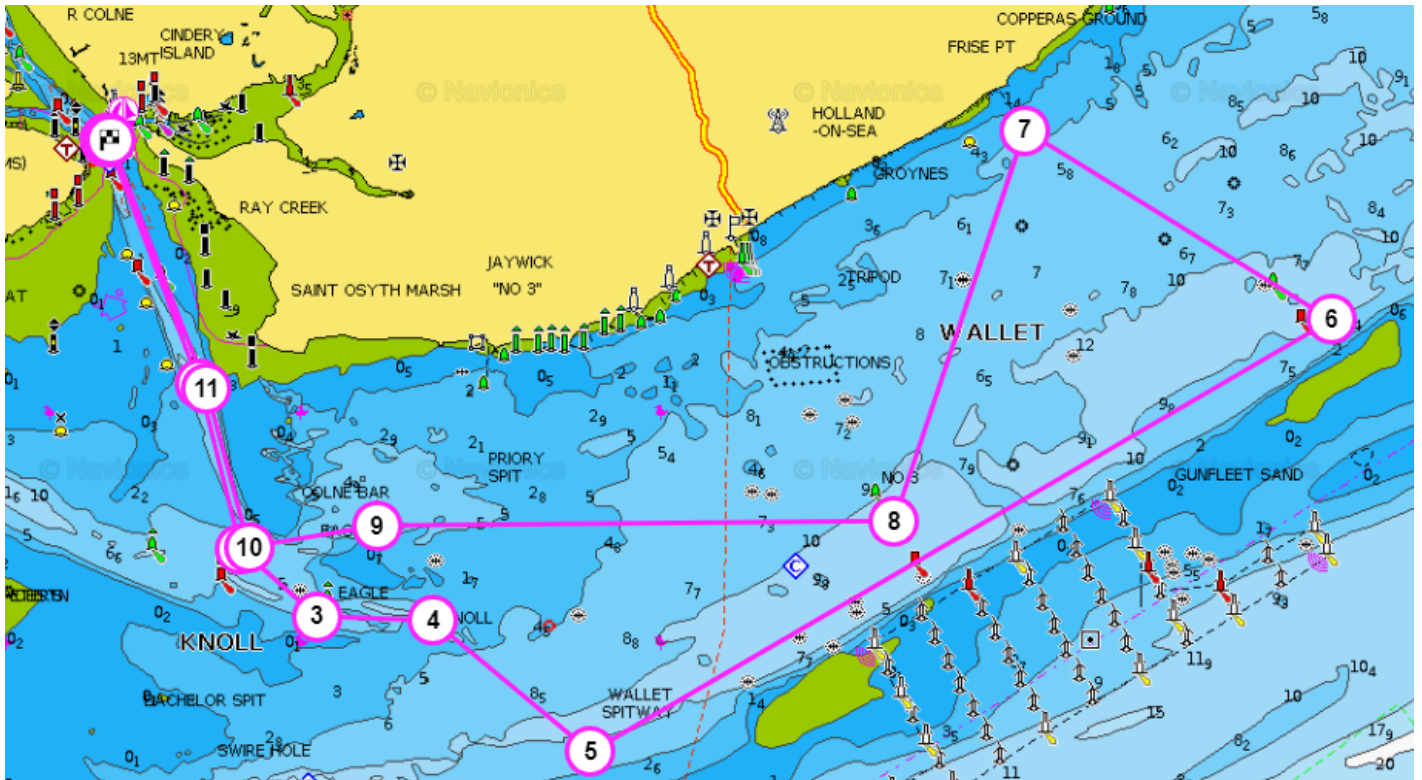
### COURSE L 1 (Approx 45Nm)

START - Colne Point (P) – Colne Bar (P) - Eagle (P) - Knoll (S) - Wallet  
Spitway (S) - Swin Spitway (P) – GFS-WF5 (P) - Gunfleet Spit (P) -  
Northeast Gunfleet (P) - North Eagle (P) - Colne Bar (S) - Inner Bench Head  
(P) - Finish.



## COURSE L 2 (Approx 30Nm)

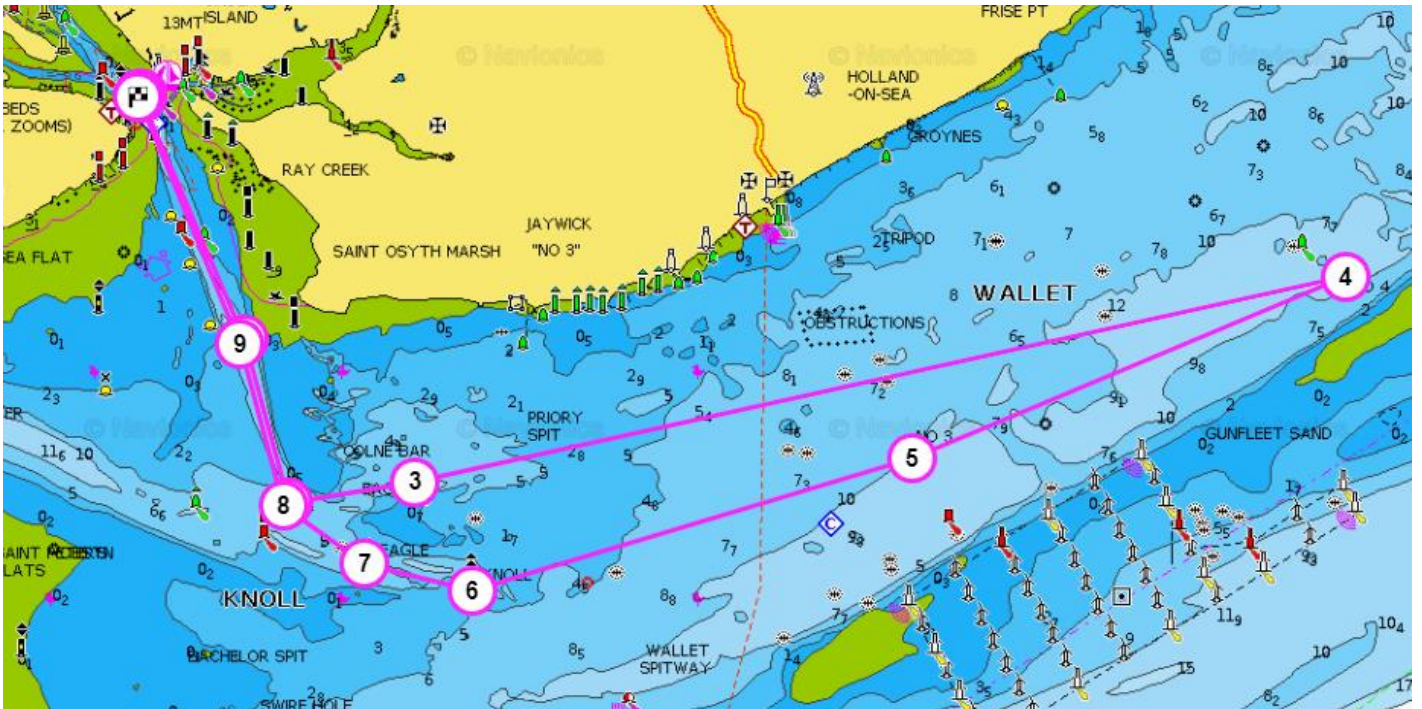
START - Colne Pt (P) - Colne Bar (P) - Eagle (P) - Knoll (S) - Wallet Spitway (P) –  
 Wallet No 4 (P) – ‘Karindy’ (P) - Wallet No 3 (S) - North Eagle (P) - Colne Bar (S) –  
 Inner Bench Head (P) - Finish.



Detail of Karindy Position

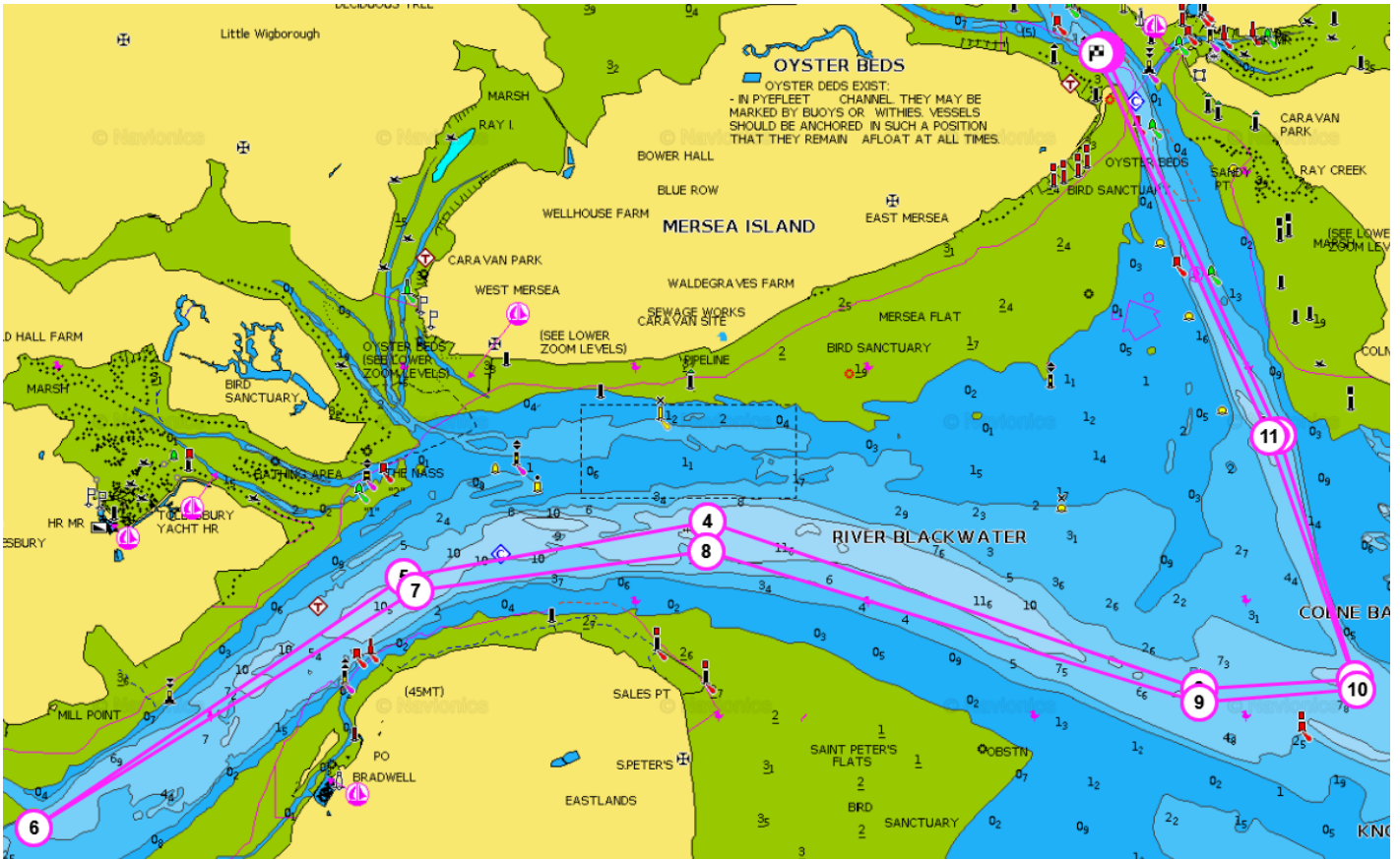
## COURSE L 3 (Approx 27Nm)

START - Colne Point (P) – Colne Bar (P) – N Eagle (S) – Wallet 4 (S) –  
Wallet No3 (S) - Knoll (S) - Eagle (S) – Colne Bar (S) – Inner Bench Head (P) –  
Finish



## COURSE L 4 (Approx 24Nm)

START – Colne Point (P) – Colne Bar (S) – Bench Head(S) – WMYC 2 (P) –  
 WMYC 5 (P) - Thirslet (P) - Bench Head (P) – Colne Bar (P) –  
 Inner Bench Head (P) – Finish



(CHARTLETS NOT TO BE USED FOR NAVIGATION)

### Non CYC Marks:

KARINDY: 51°48.1'N, 01°13.4'E (Green conical buoy off Gt Holland beach)

GFS- WF5: 51°41.95'N, 01°11.71'E

WMYC 2 : 51°45.21'N, 00°56.62'E

WMYC 5 : 51°44.92'N, 00°53.93'E

(V1.22 – GFS-WF5 position corrected)